

# 3-Phase Filters

## A-Series

3-phase RFI filters with high attenuation in wye/delta applications with integrated ground-inductor

- Max. operating voltage 440V

### Main Keypoints

- Effective by symmetrical and asymmetrical load
- Universal possibility in the industrial field
- Input filters for motor drives



up to 30A

20AYT6C and 60AYT6C also TÜV

according IEC 950



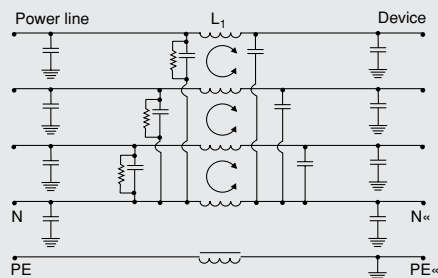
| Type    | Max. current UL | Max. voltage | Inductance     |                | Capacity             |                | Ground wire | Dimensions (mm) |       |       |       |      |
|---------|-----------------|--------------|----------------|----------------|----------------------|----------------|-------------|-----------------|-------|-------|-------|------|
|         |                 |              | L <sub>1</sub> | L <sub>2</sub> | C <sub>x</sub>       | C <sub>y</sub> |             | A               | B     | C     | D     | E    |
| 20AYP6C | 20A             | 440V         | 4x4,44mH       | —              | 3x3,2µF+<br>6x47nF   | 4x18nF         | 0,261mH     | 224,0           | 141,5 | 65,0  | 117,2 | 38,1 |
| 20AYT6C | 20A             | 440V         | 4x3,5mH        | 4x3,5mH        | 6x1,5µF+<br>3x1,47µF | 4x26nF         | 0,261mH     | 351,0           | 141,5 | 65,0  | 117,2 | 38,1 |
| 30AYP6C | 30A             | 440V         | 4x1,97mH       | —              | 3x3,2µF<br>6x47nF    | 4x18nF         | 0,261mH     | 224,0           | 141,5 | 65,0  | 117,2 | 38,1 |
| 30AYT6C | 30A             | 440V         | 4x1,66mH       | 4x1,66mH       | 6x1,5µF<br>3x1,47µF  | 4x26nF         | 0,261mH     | 351,0           | 141,5 | 65,0  | 117,2 | 38,1 |
| 45AYP6C | 45A             | 440V         | 4x1,1mH        | —              | 6x1,0µF              | 8x10nF         | 0,261mH     | 239,5           | 175,8 | 122,4 | 151,1 | 95,3 |
| 45AYT6C | 45A             | 440V         | 4x1,1mH        | 4x1,1mH        | 9x1,5µF              | 4x26nF         | 0,261mH     | 351,3           | 175,8 | 122,4 | 151,1 | 95,3 |
| 60AYP6C | 60A             | 440V         | 4x0,74mH       | —              | 6x1,0µF              | 8x10nF         | 0,242mH     | 239,5           | 175,8 | 122,4 | 151,1 | 95,3 |
| 60AYT6C | 60A             | 440V         | 4x0,74mH       | 4x0,74mH       | 9x1,5µF              | 4x26nF         | 0,242mH     | 351,3           | 175,8 | 122,4 | 151,1 | 95,3 |

Max. leakage current lead/ground 3.4 mA at 250 VAC/50 Hz

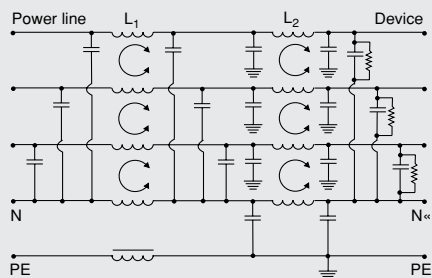
8 mounting studs No. 8-32 for installation. 10 mounting studs 1/4"x20 with nuts and washers for cable connection.

### Electrical Schematic

#### AYP6C



#### AYT6C



### Typ. Insertion Loss

asym. — sym. —

